

Release Presentation

ASAM ISSUE V3.2.0

Release Date: 2017/02/15 – Helmut Kuhlmann Robert Bosch GmbH

Introduction to ASAM-ISSUE Standard

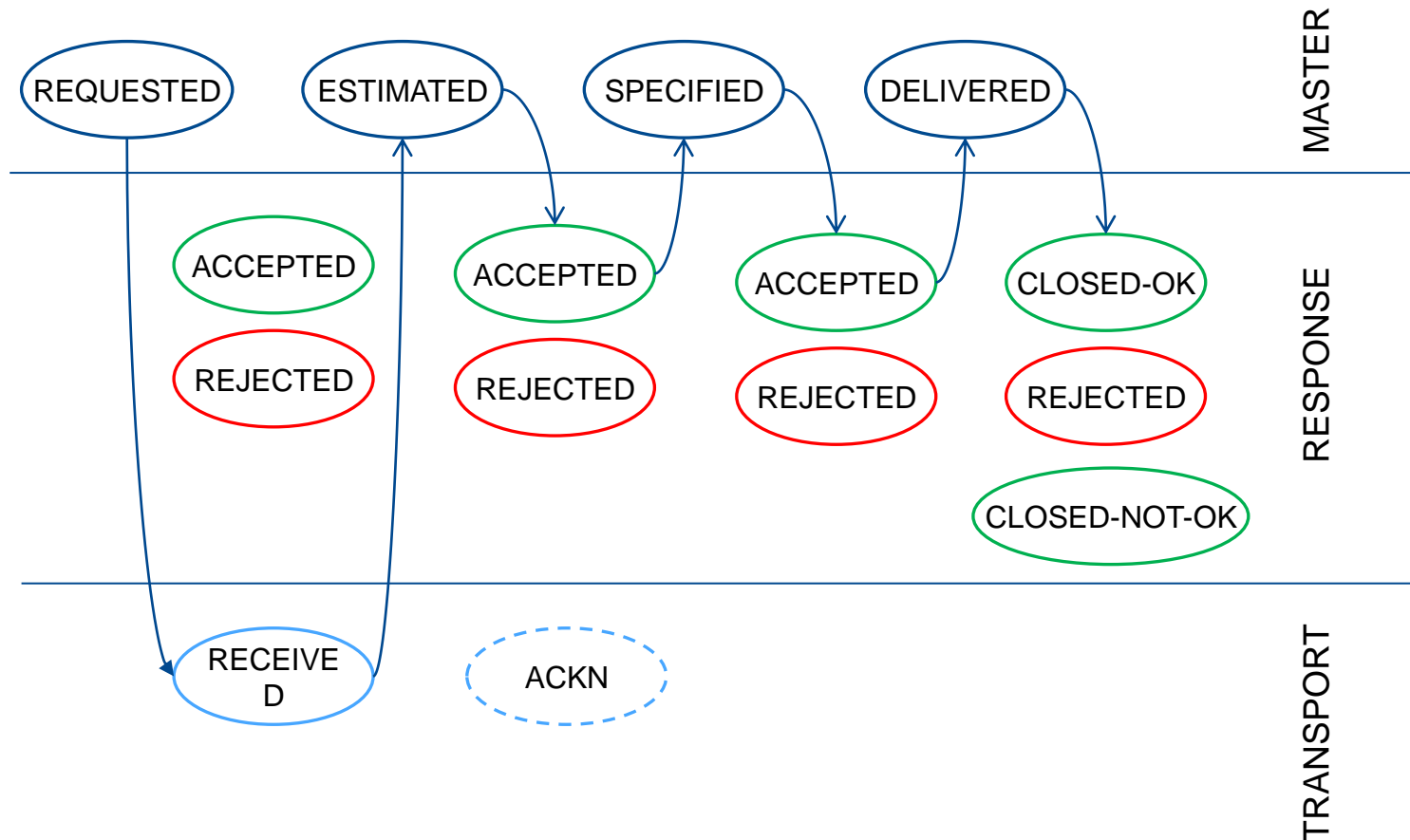
- **Scope**
 - tool-independent XML-format for exchanging requirements and defect reports between supplier and OEM

- **Motivation**
 - reduced cycle times for automotive software development
 - conventional issue exchange is inefficient due to
 - media disruption
 - delay in transmission/tracking time
 - data inconsistency
 - bilateral interface implementation
 - standardization of exchange format enables
 - transparent handling of information among all participants
 - agreement to a common lifecycle state model
 - elaboration on best practices
 - application of a common tool approach for various interfaces

- **Implementation of ASAM-ISSUE**
 - standard is supplied with documentation and schema (XSD)

Introduction to ASAM-ISSUE Standard

- ASAM-ISSUE Lifecycle model:



ASAM-ISSUE V3.2.0

- State-Model Extensions
 - Introduction of an additional attribute „ORIGIN“ in order to express originating state which in turn is mandatory for response states like ACCEPTED or REJECTED
 - Introduction of additional attributes „EXPORT-COUNTER-OEM“ and „EXPORT-COUNTER-SUPPLIER“ in order to represent the sequence of messages, which lack of handshake mechanism like Informational-Update
 - Introduction of an additional ISSUE-STATE „PROPOSED“

- Addition of „ISSUE-INITIATOR“ which shows the initiating company for the Issue

- Extension of ISSUE-CATEGORY by a „LEVEL“ attribute in order to express architecture level of related Issue

Expected advantages

- Reduced ambiguity in applying ASAM AE-ISSUE standard
- More reliability by validation of counter attributes w.r.t. INFORMATIONAL-UPDATE
- More flexibility by exchanging messages already in a premature state
- Enlargement of application area by allowing issues to sub level elements

Possible disadvantages

- Residual ambiguity w.r.t. deprecated APPROVED state
- More effort needed in implementation of INFORMATIONAL-UPDATE
- Risk of extended procession time in PROPOSED state
- Usage of LEVEL attribute needs to be harmonized between OEM and supplier