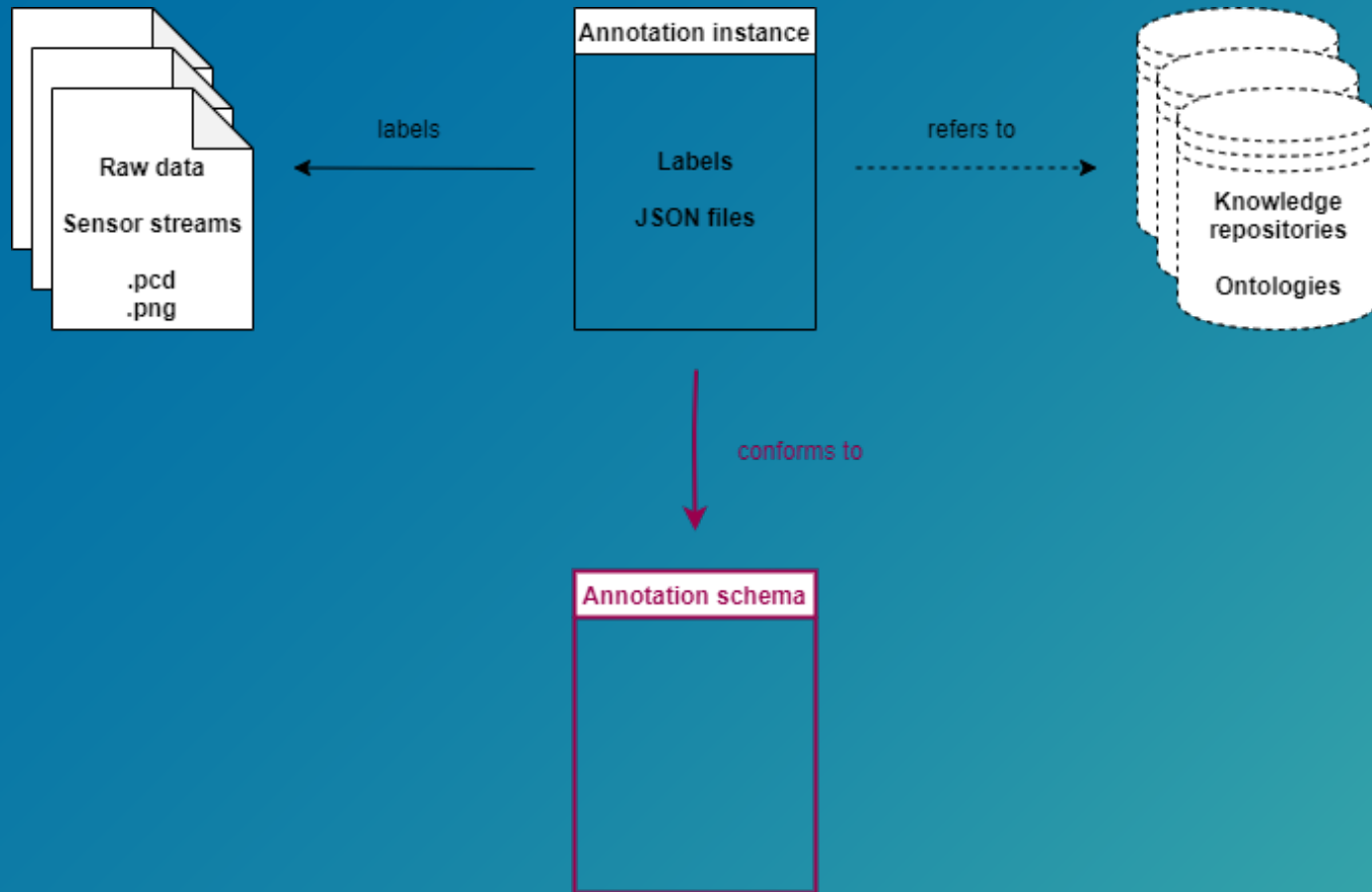


Intro To Multi-Sensor Data Labeling

OpenLABEL V1.0.0 Release Webinar

Intro To Multi-Sensor Data Labeling

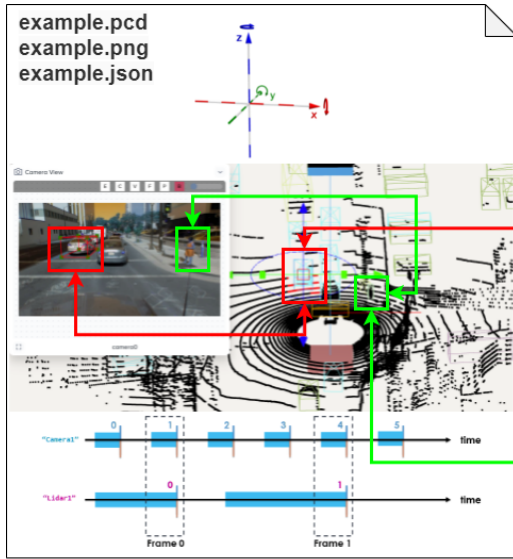
OpenLABEL V1.0.0



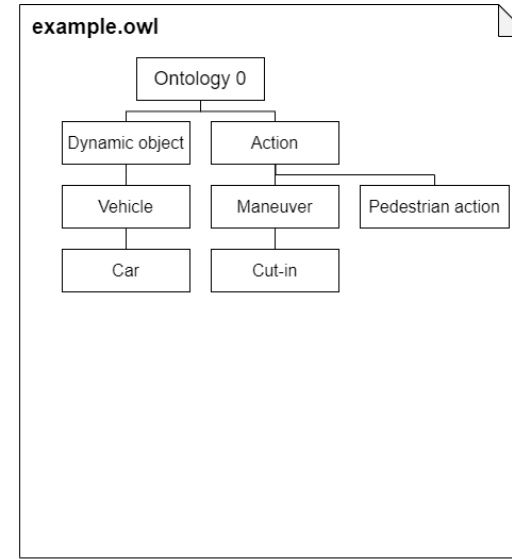
Documentation:

- Lists the raw data considered relevant for the multi-sensor data labeling use case.
- Introduces and describe in detail the annotation schema, its structure, elements, and the different ways of expressing labeling geometries, coordinate systems, transforms, and other information relevant for multi-sensor data labeling.
- Describes the mechanisms that govern the reference to external knowledge repositories, such as ontologies, that organize and define the semantics of the labels.
- Supported data types and their representation.
- Provide examples that show how to utilize the schema to produce valid annotation instances in relevant specific cases.

OpenLABEL V1.0.0 Multi-Sensor Data Labeling



```
example.json
{
  "openlabel": {
    "metadata": {
      "schema_version": "1.0.0"
    },
    "ontologies": {
      "0": "https://www.example.org/example.owl",
    },
    "objects": {
      "0": {
        "name": "object1",
        "type": "car",
        "ontology_uid": 0
      },
      "1": {
        "name": "object2",
        "type": "pedestrian",
        "ontology_uid": 0
      }
    }
  }
}
```



labels

refers to

conforms to

```
openlabel_json_schema.json
{
  "openlabel": {
    "properties": {
      "actions": {...},
      "contexts": {...},
      "coordinate_systems": {...},
      "events": {...},
      "frame_intervals": {...},
      "frames": {...},
      "metadata": {...},
      "objects": {...},
      "ontologies": {...},
      "relations": {...},
      "resources": {...},
      "streams": {...}
    }
  }
}
```



Association for Standardization of Automation and Measuring Systems

OpenLabel Structure - Labeling

