

ASAM OpenLABEL Webinar

Nicco Hagedorn
Global Technology Manager, ASAM e.V.

November 17, 2021

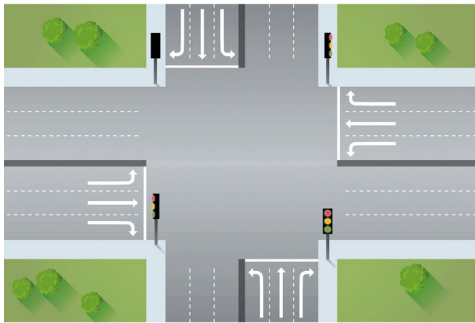


ASAM OpenLABEL within the OpenX Family

An Overview of ASAM OpenX...

8 individual standard initiatives

ASAM OpenDRIVE®



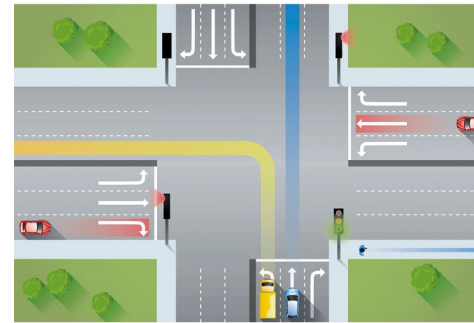
Static Road Network Description

ASAM OpenCRG®



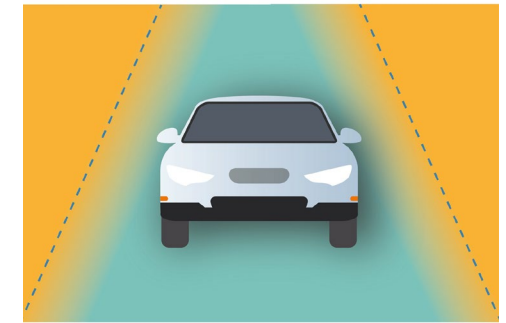
Static Road Surface Description

ASAM OpenSCENARIO®



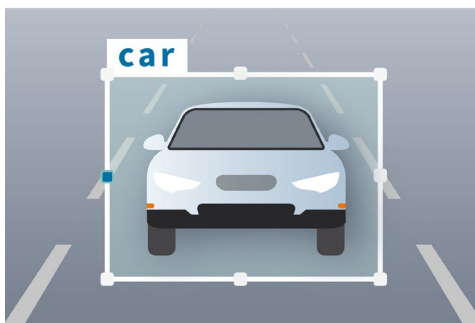
Dynamic Scenario Description

ASAM OpenODD



Defining the Operational Design Domain for Automated Vehicles

ASAM OpenLABEL



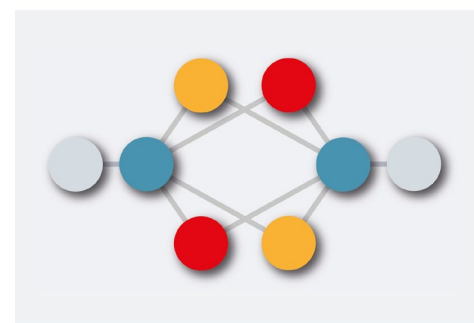
Standardized Labeling for objects and Scenarios

ASAM OSI®



Interface for Simulation

ASAM OpenXOntology



Core Domain Model for the ASAM Simulation Domain

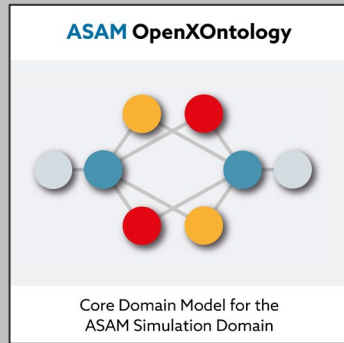
ASAM Study Project Test Specification



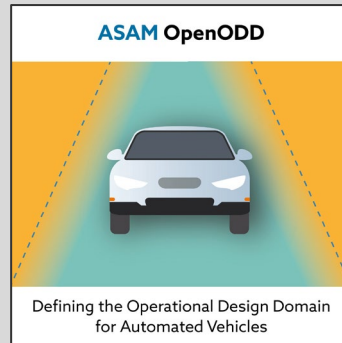
Analysis and harmonization of automotive testing techniques and standards

Vision of ASAM OpenX...

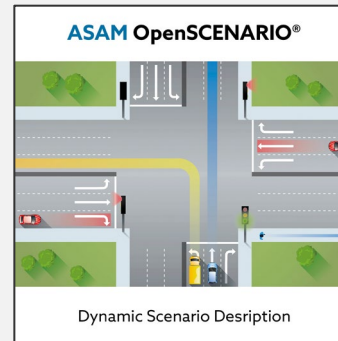
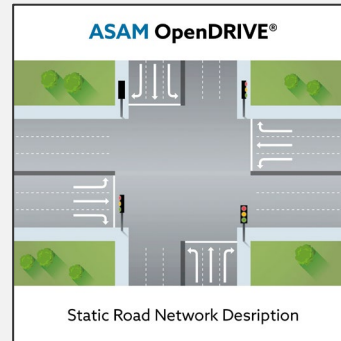
Domain Ontology



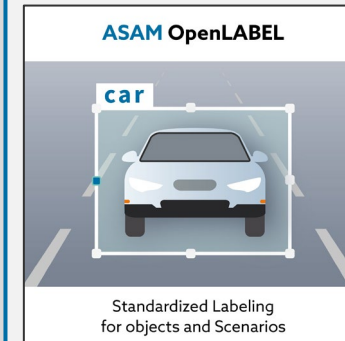
Operational Design Domain



Static and dynamic content of a scenario



Annotation

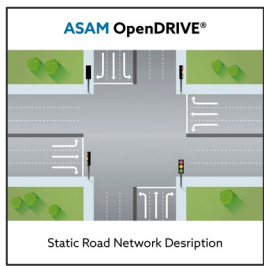


Interface

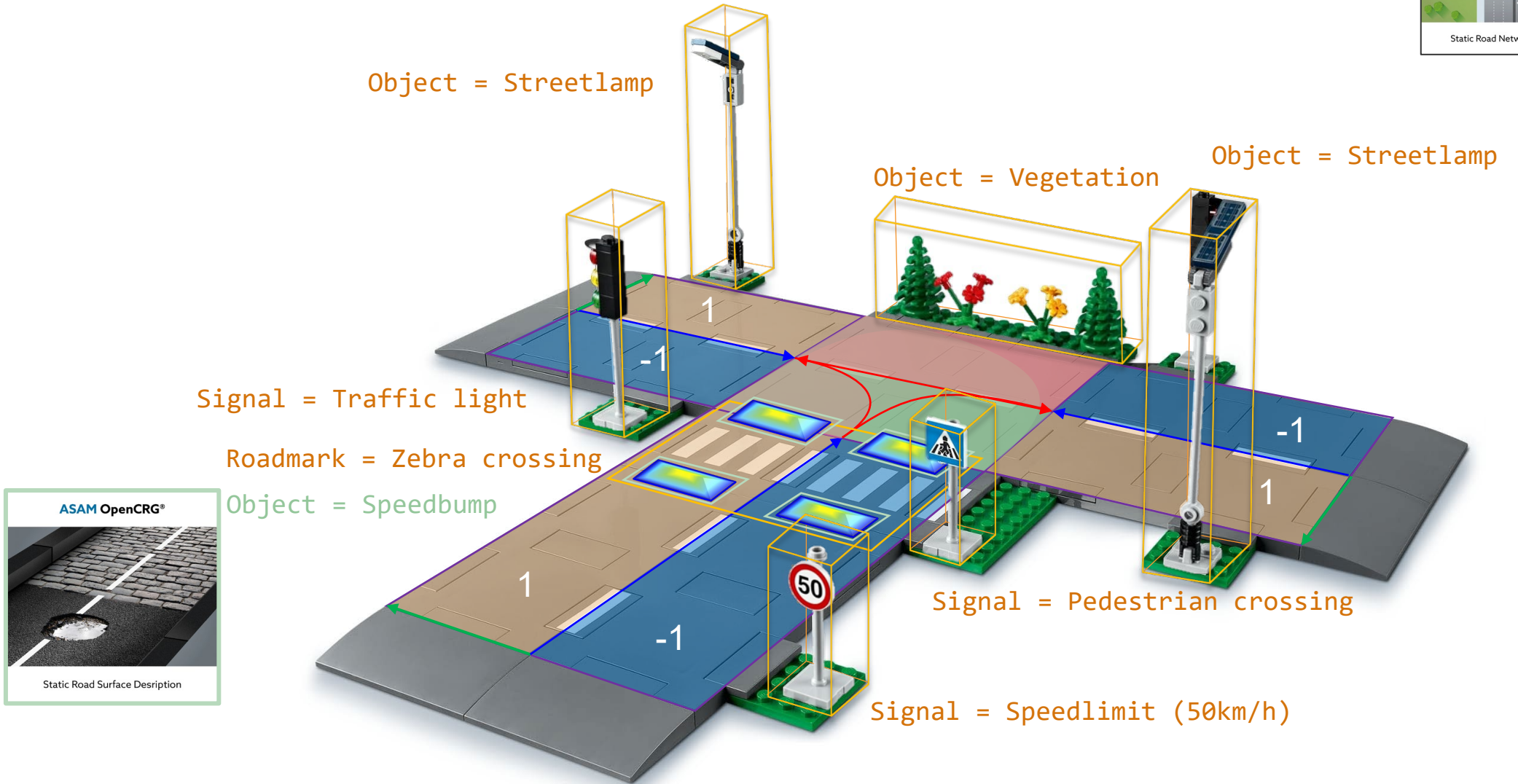
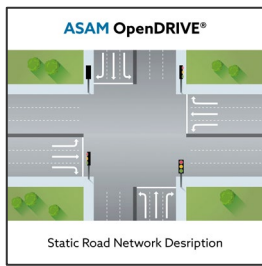


Define ASAM OpenDRIVE for a simple T-Junction

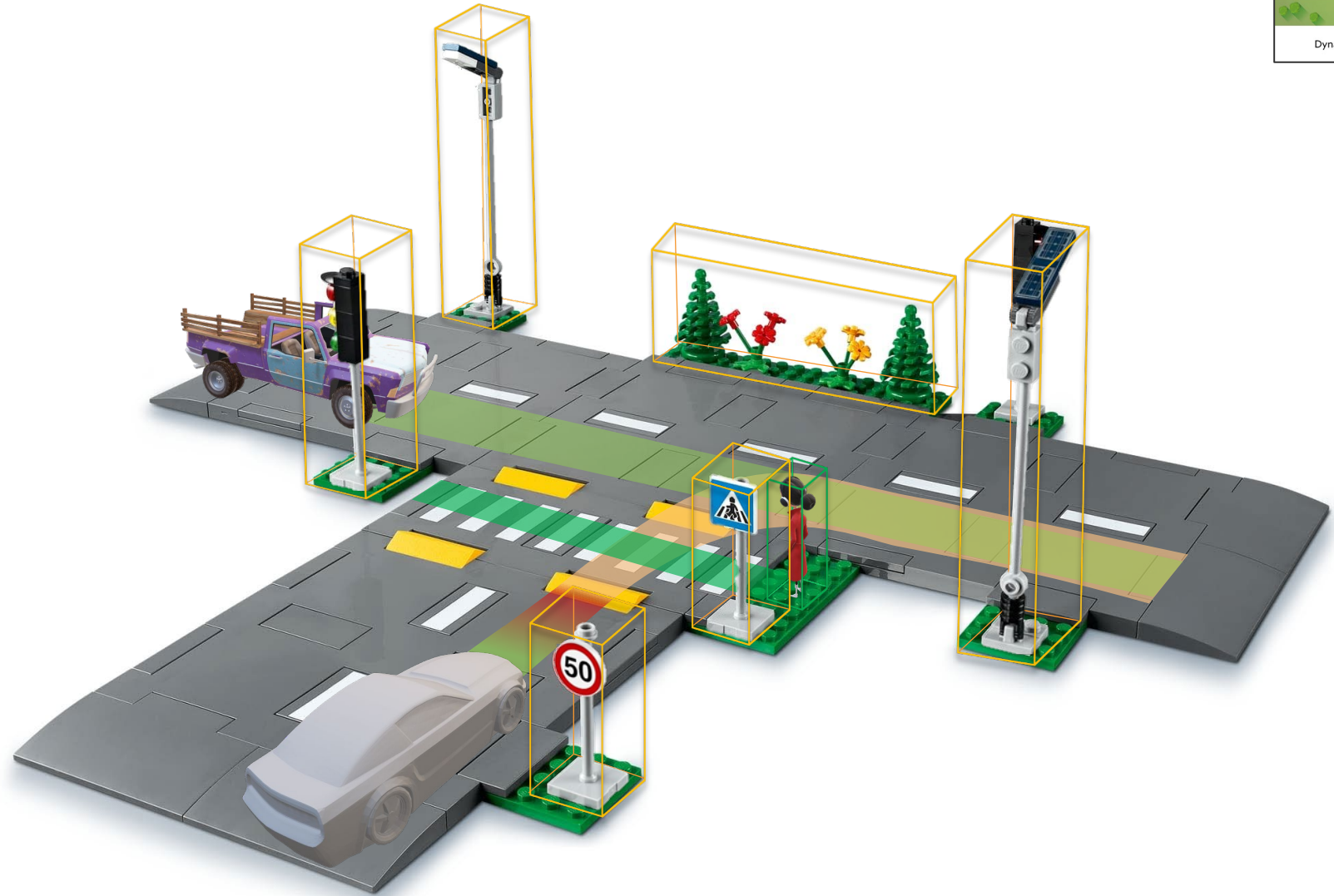
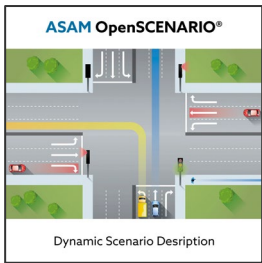
ASAM OpenDRIVE Example: T-Junction



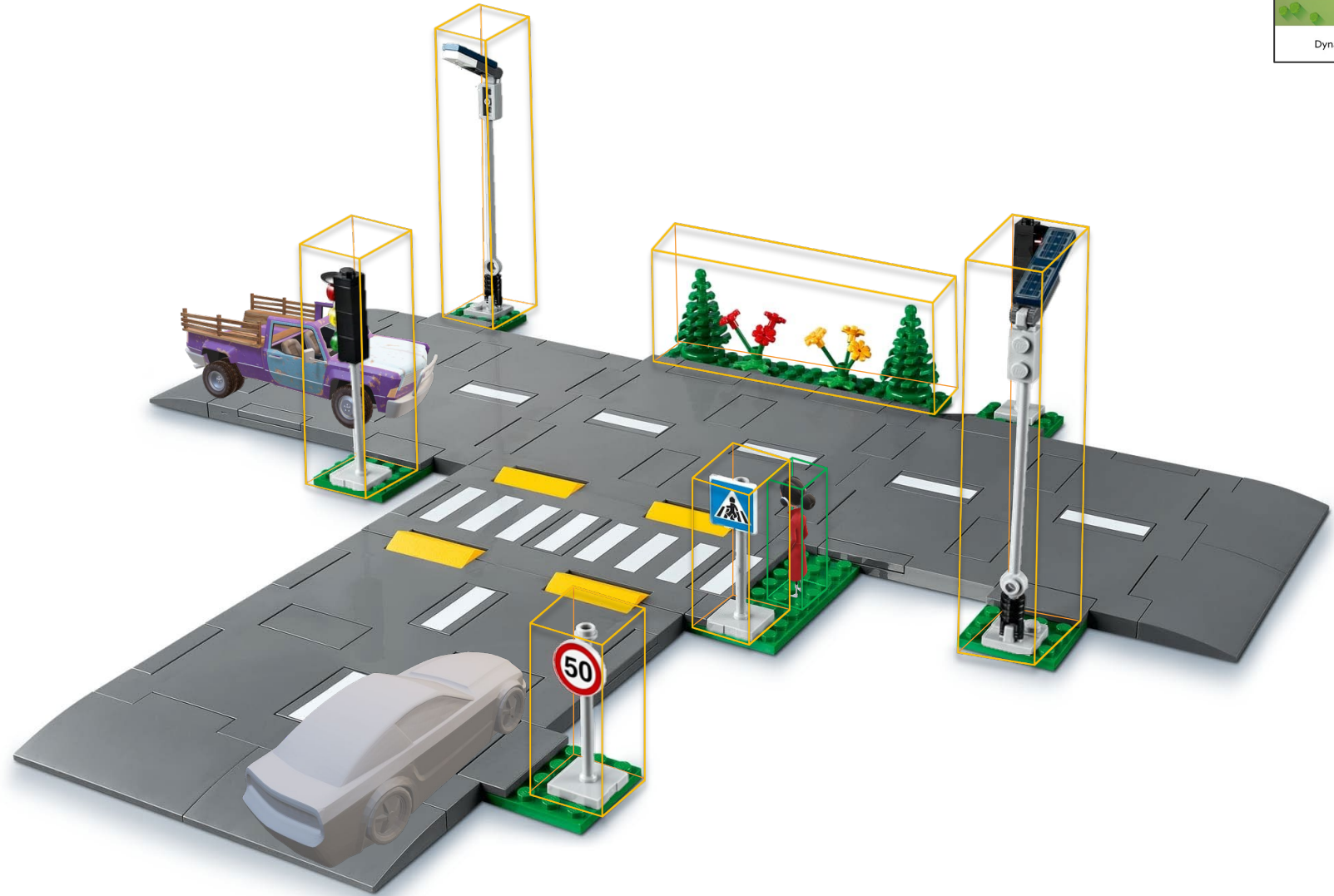
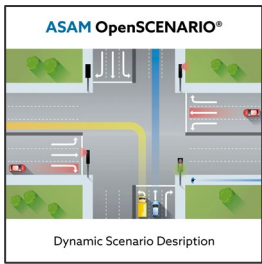
ASAM OpenDRIVE Example: T-Junction



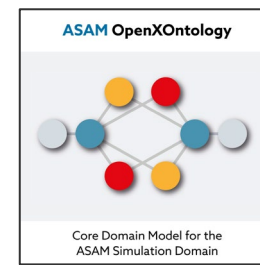
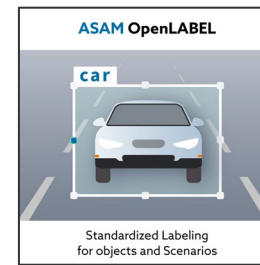
ASAM Multi-sensor-data Labeling



ASAM Multi-sensor-data Labeling



ASAM OpenLABEL: Object labeling



```
{ "openlabel": {  
  "metadata": {  
    "schema_version": "1.0.0" },  
  "objects": {  
    uuid: { "name": "sign_speedlimit_50",  
            "type": "traffic_sign",  
            "object_data": {  
              "cuboid": [{  
                "name": "sign_speedlimit_50",  
                "val": [x, y, z,  
                        qa, qb, qc, qd,  
                        sx, sy, sz],  
              "attributes": {  
                "boolean": [{  
                  "name": "visible",  
                  "val": true }],  
              }]  
            }  
          }  
        }  
      }  
    }  
  }  
}
```

