

Project Proposal

Content of OpenDRIVE 1.7.0 vs. 1.8.0

Content of the Releases

OpenDRIVE 1.7.0 (Release July 2021)

Issues:

- #18: Overlapping bike lanes
- #22: details difficult to find in documentation
- #39: short lane sections
- #42: U-Turn Example
- #43: Link related topics
- #49: LaneValidity vs. Orientation
- #50 : Object-CRGs

Concepts:

- Direct Links

OpenDRIVE 1.8.0 (Release November 2022)

Issues:

- #10 Lane height with applied superelevation and elevation
- #16 Modelling/Handling of double markings
- further issues will be added to the project in accordance with the available resources

Concepts:

- External Object Reference
- Interface to other GIS Standards
- Prohibit combination of shape and superelevation
- Junction modelling: junction road and junction borders
- Object Lists
- Specify length of virtual junctions
- further concepts will be added to the project in accordance with the available resources

OpenDRIVE Conformity Test

Goal:

The goal of the conformity test is to check the exchangeability of OpenDRIVE files and how this can be improved.

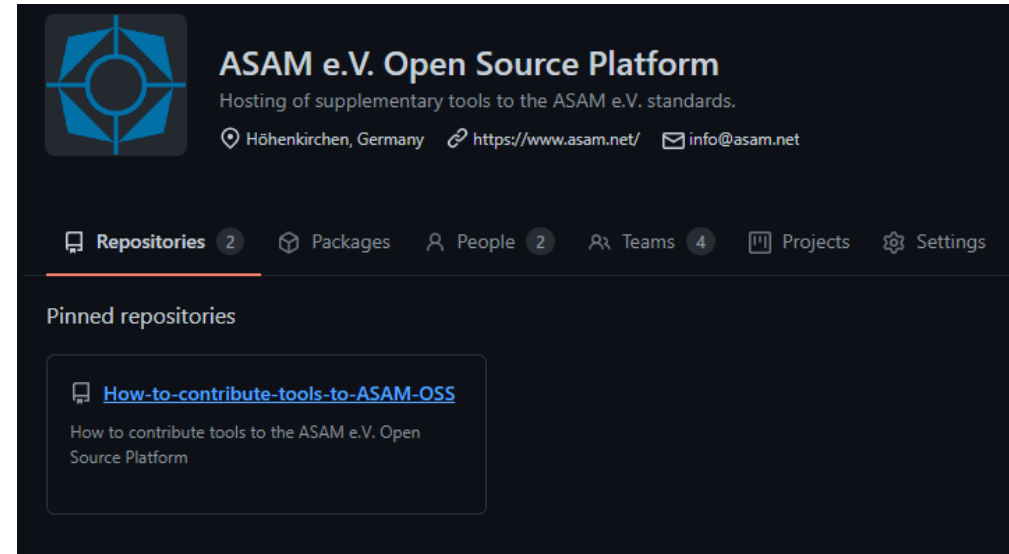
Kickoff an OpenSource Project to implement:

- OpenDRIVE Syntax Checker
- OpenDRIVE Semantic Checker according to Rules

In the OpenDRIVE Project the CCB for the OpenScoure Project will be setup.

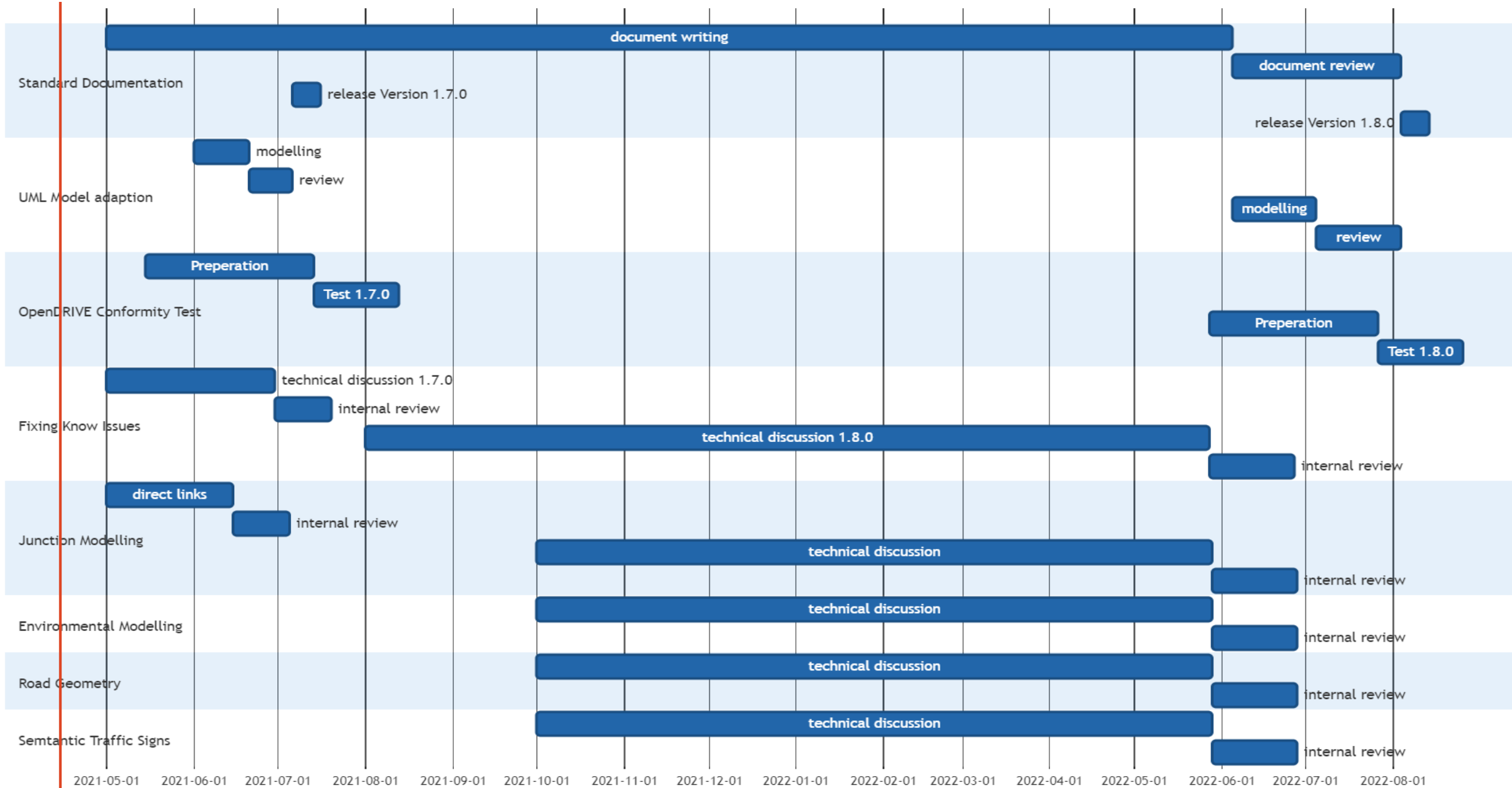
Needed Resources:

Simple and complex example xodr files for the development.



<https://github.com/asam-oss>

Roadmap OpenDRIVE 1.7.0 and OpenDRIVE 1.8.0



Needed Resources for the Workpackages

Open for Discussion

Description	Deliverable	Effort (Man-days)
Standard Documentation	<ul style="list-style-type: none">•OpenDRIVE 1.7.0 (July 2021)•OpenDRIVE 1.8.0 (Nov 2022)	240 days
UML Model adaption	<ul style="list-style-type: none">•UML Model 1.7.0 (July 2021)•UML Model 1.8.0 (Nov 2022)	50 days
OpenDRIVE Confomitiy Test	<ul style="list-style-type: none">•Test Report 1.7.0•Test Report 1.8.0	240 days
Fixing known issues for 1.7.0	n.a.	40 days
Direct Links	n.a.	30 days
Fixing known issues for 1.8.0	n.a.	100 days
Junction Modelling	n.a.	240 days
Environmental Modelling	n.a.	200 days
Road Geometry	n.a.	240 days
Semantic Traffic Signs	n.a.	80 days

Enrollment and Commitment

- ASAM Membership required
- Minimum Commitment 40days
- Recommended Commitment 60 days from May 1st 2021 – 30th November 2022
- Link to enroll: <https://www.asam.net/project-detail/asam-opendrive-v180>

Doodle to setup the Kickoff Meeting

https://doodle.com/poll/er3c446p72snh23a?utm_source=poll&utm_medium=link

Enroll in the Project:

(Enroll by: **Apr 15, 2021**)

Please note:

- ASAM membership is required to take part.
- We request a commitment of 40 person days (but recommend 60 person days) per company for a duration of 19 months.
- To enroll, please fill in the form below or contact nicco.dillmann@asam.net

Title * First Name * Last Name *

Mr.

Company *

Email *

Phone * Country *

Resource commitment (number in person days) *

Enroll also the following persons (name, email, phone)

ENROLL