

OpenMATERIAL® & 3D Model Structures

General Assembly Introduction

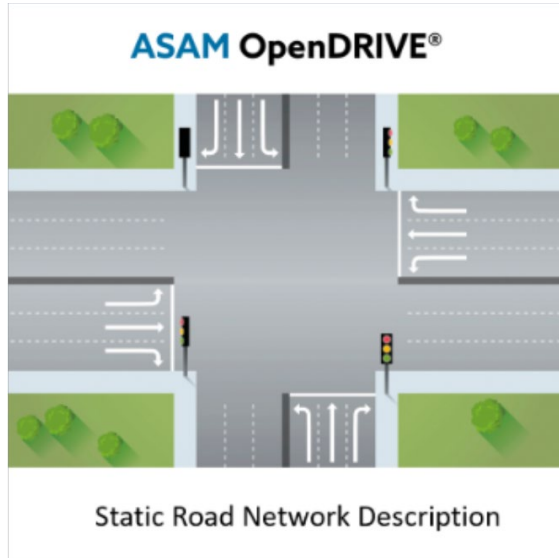
Dr.-Ing. Clemens Linnhoff
Persival GmbH

Sosuke Kimura
DIVP® Project, JAPAN

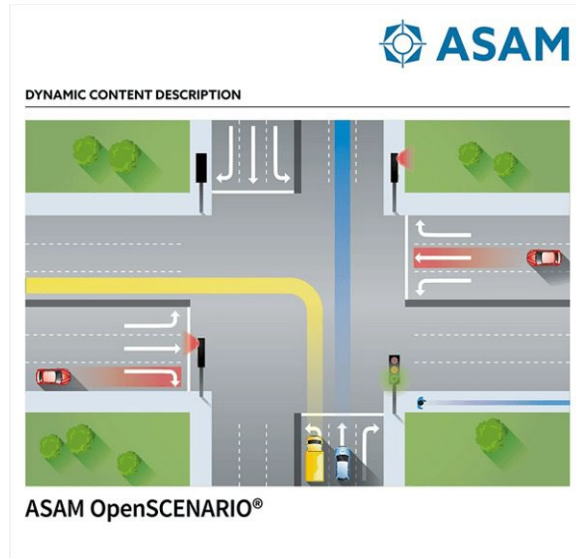
17. April 2024
Germany



Project Motivation



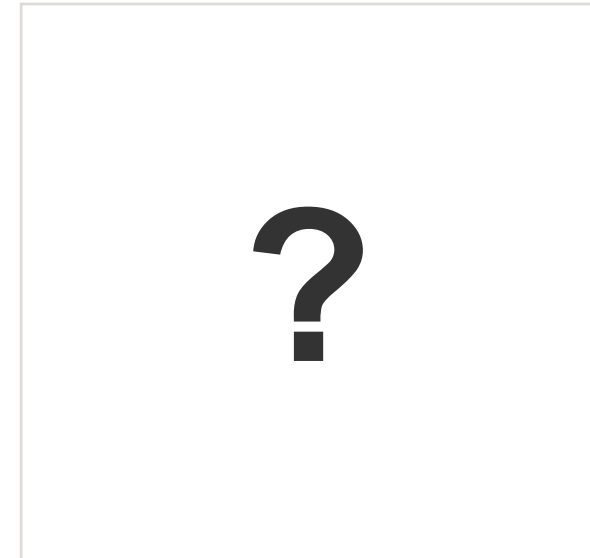
Where are we driving?



What are dynamic elements doing?



How to transfer information between models?



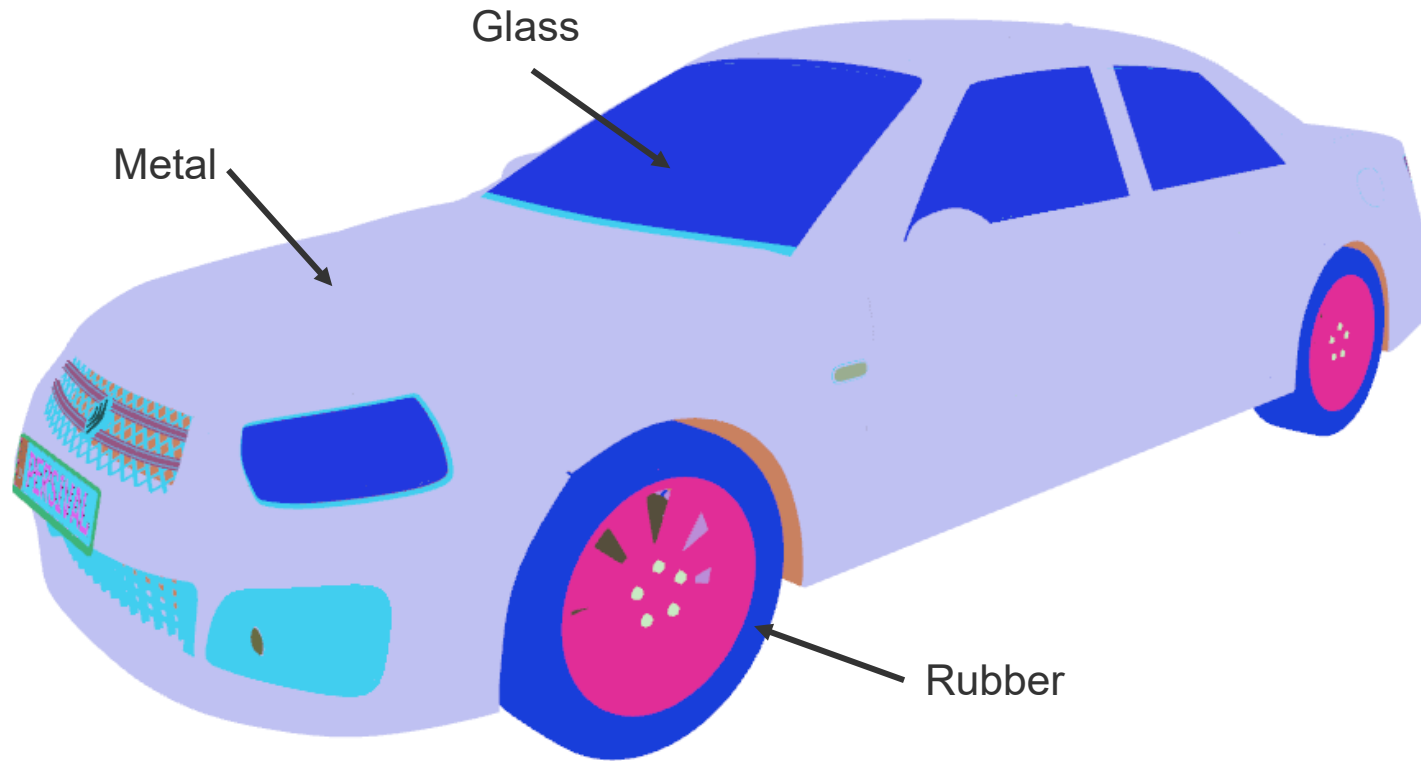
What does the environment look like (to perception sensors)?

What is the project about?



3D assets

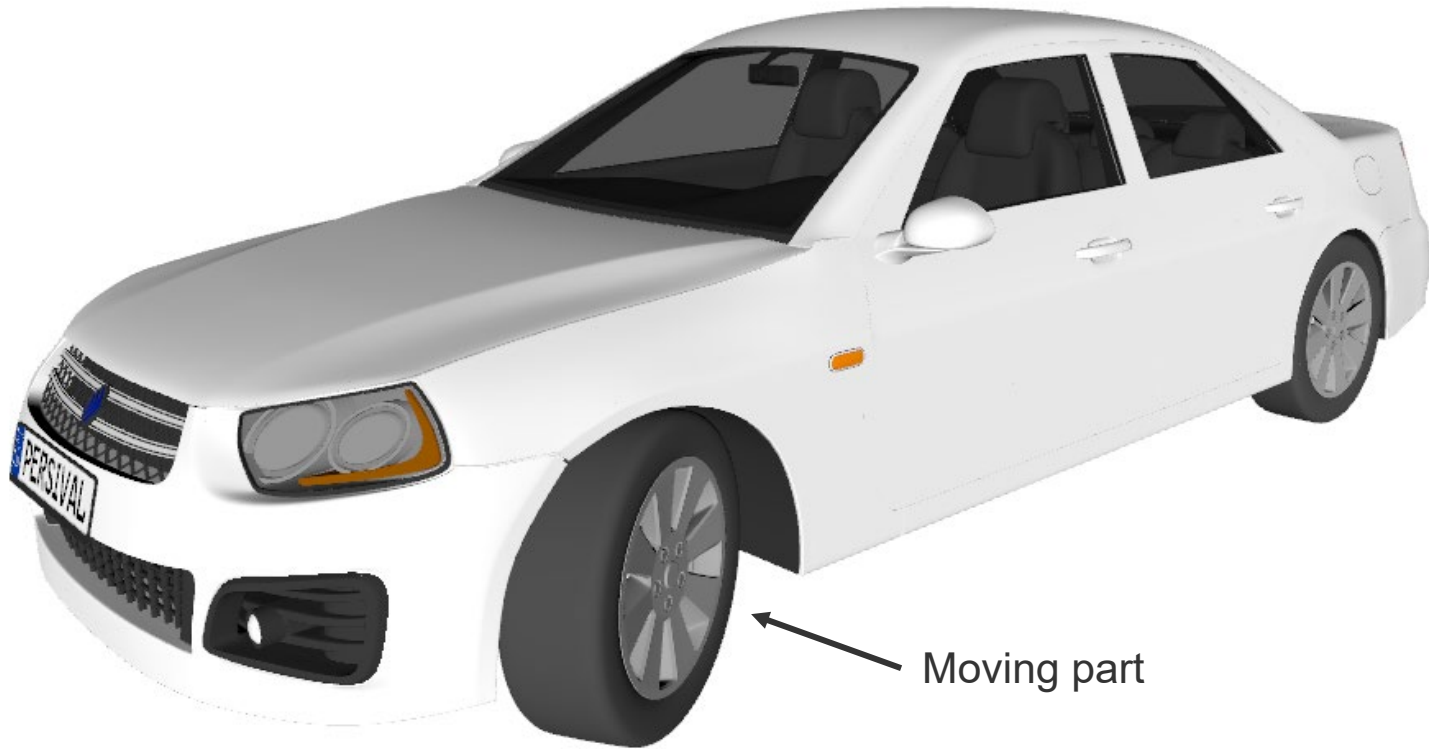
What is the project about?



Define physical material properties

Assign materials to 3D geometry

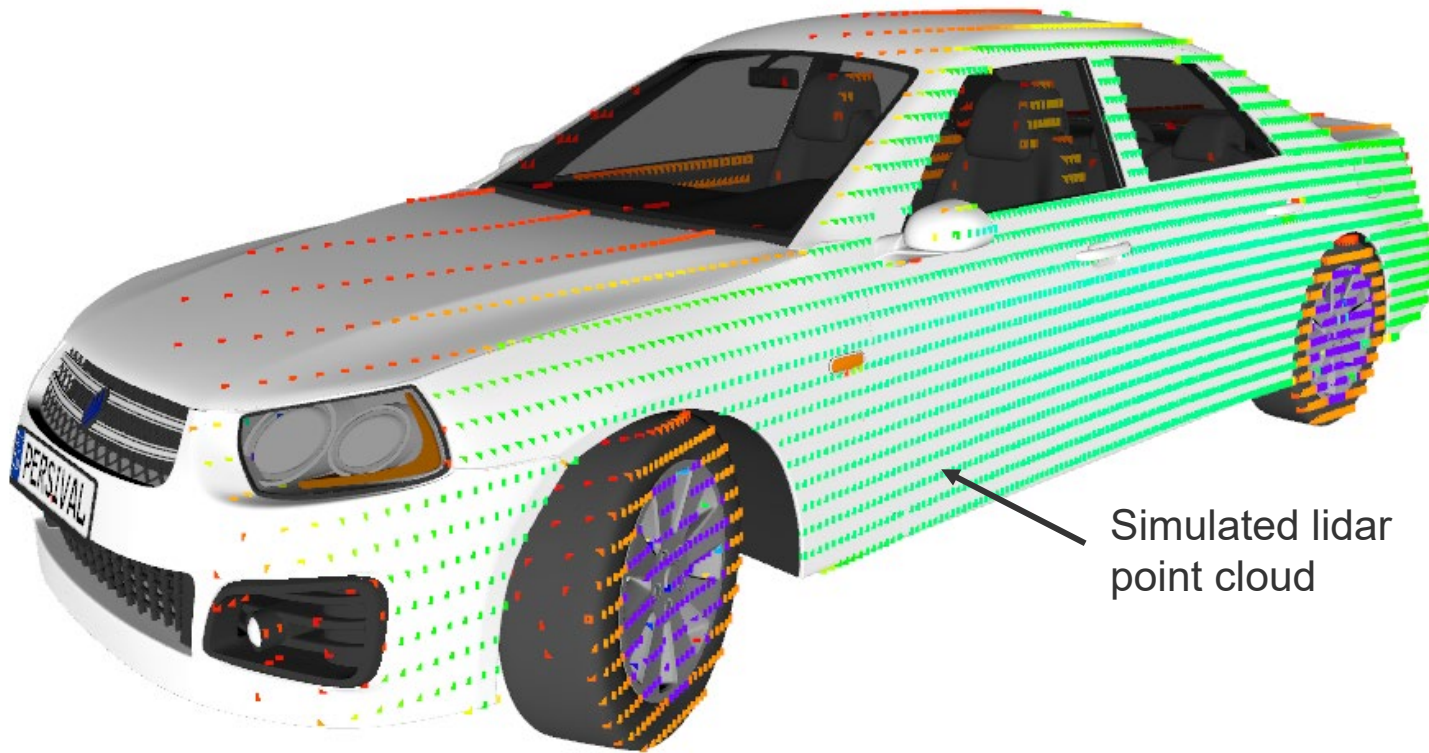
What is the project about?



**Define hierarchy
and structure**

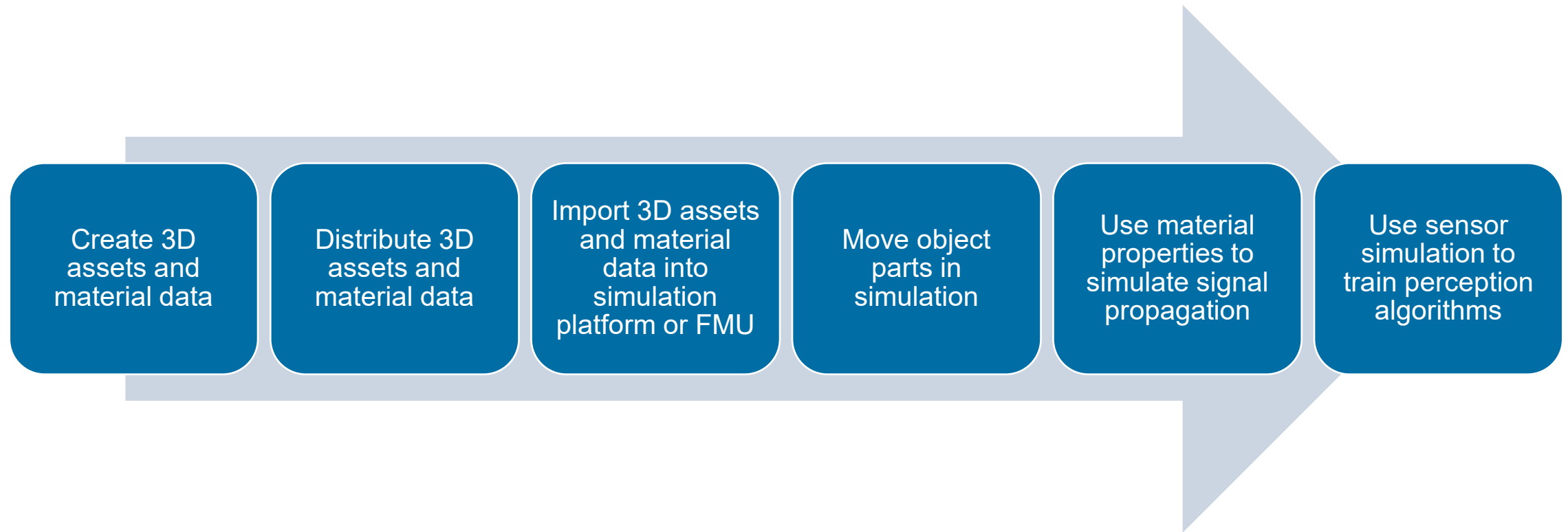
**Coordinate
systems of moving
parts**

What is the project about?



**Enable perception
sensor simulation**

Use Cases



Project Participants

Number Project participants	Number Project member (company)	Countries
65	25	9

Company participants

51WORLD

Advanced Data Controls Corp.

Ansys

Automotive Data of China (Tianjin) Co.Ltd

BIPROGY

BMW

Continental

dSPACE GmbH

Foretellix, Inc.

Fraunhofer IESE

Hexagon MI

IAE Suzhou Technologies Co., Ltd.

IPG Automotive GmbH

Kanagawa Institute of Technology

Mitsubishi Precision Company

Persival GmbH

PilotD Automotive (Shanghai) Co., Ltd.

rFpro

RWTH Aachen (MMI)

Shanghai Jiao Tong University

Shanghai Waylancer Automotive Technology Co.

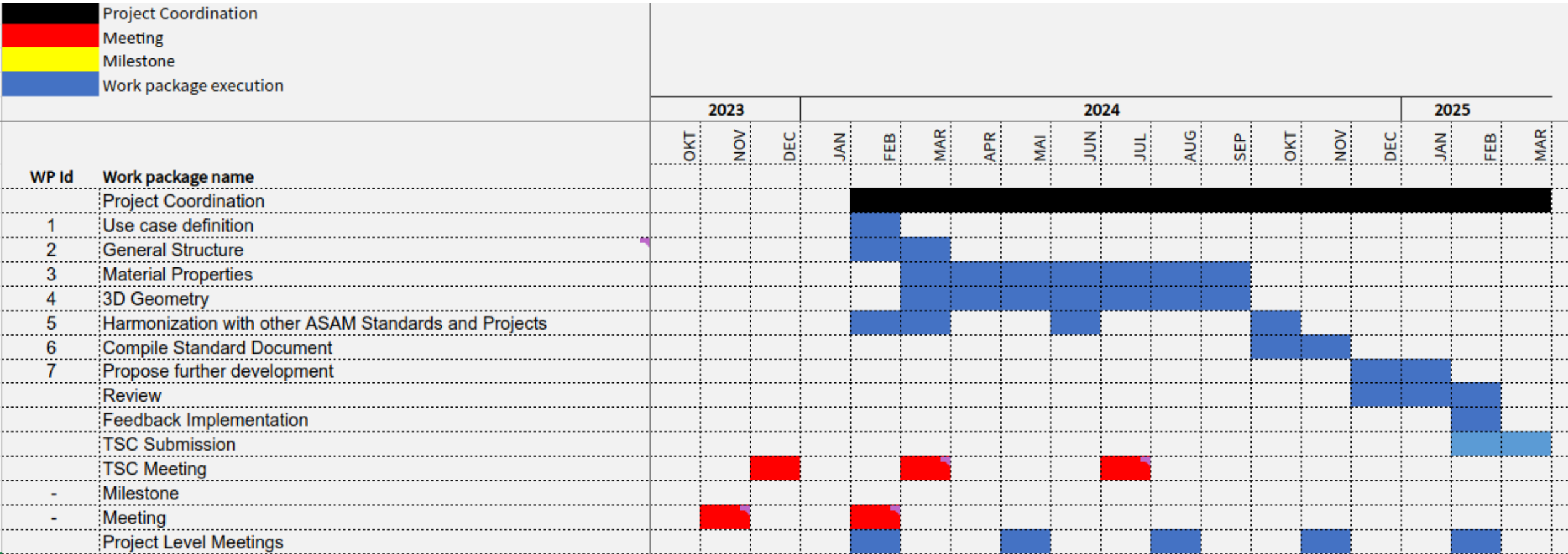
TrianGraphics

Virtual Vehicle Research GmbH

Volvo Group India Private Limited

WMG, University of Warwick

Project Plan



**Any questions?
Feel free to contact us.**

17. April 2024

Project Lead

Clemens Linnhoff

clemens.linnhoff@persival.de

ASAM Office

Diego SANCHEZ LAZARO

diego.sanchez@asam.net